

Transitioning from FlexWare to Sensus Launch Pad

For Electric Utilities with RNI 3.3.x systems



DESCRIPTION

This document aids RNI system operators and administrators in migrating their device management processes to the Sensus Launch Pad applications. It provides instructions on where to access device information, including read data, alerts and reports in the new applications as compared to the current application.

SENSUS LAUNCH PAD

One landing page which provides access to the Sensus suite of applications: (Figure 1):

- Electric Device Manager (DM)
- Firmware Download (FWDL)
- System Administration
- CommStats
- RNI Interface (FlexWare)

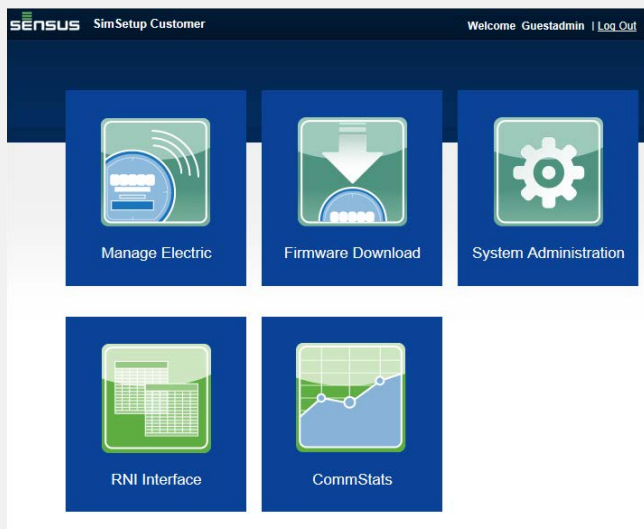


FIGURE 1: SENSUS LAUNCH PAD

ABOUT THIS DOCUMENT

The content of this document displays tasks in table format, grouped as follows:

- Electric Device Manager application
 - Operations: monitoring devices
 - Administration: managing and configuring devices
 - Provisioning: modifying configuration of devices
 - Managing Demand Response (HAN) Devices
- System Administration application
- Firmware Download application
- CommStats application

Each table is divided into three columns; the **Task** being performed, where the task was performed in **FlexWare**, and where to perform the task in Sensus Launch Pad.

CONVENTIONS IN THIS DOCUMENT

Devices > Meters Denotes a menu hierarchy, in this example choose the **Devices** menu and then the **Meters** tab

FOR MORE INFORMATION

- Online: www.sensusmartstart.com
- Email: education@sensus.com

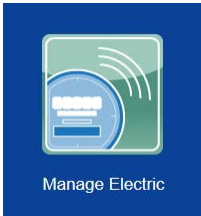


Transitioning from FlexWare to Sensus Launch Pad

For Electric Utilities with RNI 3.3.x systems



SECTION 1: ELECTRIC DEVICE MANAGER APPLICATION




OPERATIONS

Device Manager is focused on two types of operational tasks: 1) monitoring FlexNet[®] device health and performance through read data, device status and communications, reporting and alert management, and 2) performing actions on devices to request data or enable/disable features.

MONITOR READ AND COMMUNICATION DATA

Device Manager displays various read data types (device dependent) including, interval, peak demand, snapshot and TOU, as well as communication data; RIS, buddy and stale reads.

TABLE 1: VIEW DEVICE DATA

Task	FlexWare	Device Manager
Reads		
Interval reads for a device	Search for a device > IMIP > Summary > Chart or Table	Search for a device > Device Details > Interval Reads > Table and/or Chart
Register reads on a device	Search for a device > IMIP > Summary > Latest Readings	Search for a device > Device Details > Interval Reads > Read Data
TOU Data for a device	Search for a device > IMIP > Summary > Latest Readings	Search for a device > Device Details > TOU
Power Quality for a device	Search for a device > IMIP > Summary > Power Quality or Voltage Chart	Search for a device > Device Details > Power Quality
Snapshot Data for a device	Search for a device > IMIP	Search for a device > Device Details > Snapshot Data
Peak Demand for a device	Search for a device > IMIP > Summary > Latest Readings or Demand Resets	Search for a device > Device Details > Peak Demands
Latest readings	Search for a device > IMIP – UI automatically notifies when new readings are available	Search for a device > Device Details > Refresh button 
Demand Read	Search for a device > IMIP > Commands > Perform Demand Read	Search for a device > Actions > Get Data from Device <ul style="list-style-type: none"> ➤ Get On the Glass Read ➤ Get Service Quality Read ➤ Get Supervisory Read

Transitioning from FlexWare to Sensus Launch Pad

For Electric Utilities with RNI 3.3.x systems



Task	FlexWare	Device Manager
Communications		
Communication Statistics for a device	Search for a device > IMIP > Status > Communications	Search for a device > Device Details > Communications
Route Analyzer		
Access the Route Analyzer	Search for a device > IMIP > Status > Route Analyzer	Search for a device > Device Details > Communications > Route Analyzer

VIEW REPORTS

Electric Device Manager provides two simplified reports, Troubled Meter and Lifecycle, which present key data for monitoring and maintaining device health. It is recommended to review these reports on a regular basis to investigate potential device issues. Electric DM also offers user-defined reporting created through filtering and sorting on Devices and Alerts lists. All reports are easily exported to comma separated value (csv) file.

TABLE 2: REPORTS

Task	FlexWare	Device Manager
List of Installed Meters	Reports > Installed Meters Report	Devices > Meters > Device List > Filter by Lifecycle State Installed
List of communication statistics for installed meters	Reports > Communications Statistics	Reports > Troubled Meter
List of Alerts	Reports > Event Log	Alerts Menu
List of devices with encryption status	Reports > Encryption Status	<i>Not available with this release. Encryption on an individual device can be viewed on the Device Details > About This Device page.</i>
List of devices with quarantined reads	Reports > Quarantined Meters	Devices > Meters > Device List > Filter by Alert (type) Read Data Quarantine
List of devices with power outage	Reports > Outage Report	Devices > Meters > Device List > Filter by Alert (type) Power Fail

Transitioning from FlexWare to Sensus Launch Pad

For Electric Utilities with RNI 3.3.x systems



Task	FlexWare	Device Manager
List of requests sent to a meter	Reports > Two Way Log	System Intelligence > Today <ul style="list-style-type: none"> ➤ Scheduled Events ➤ Event History
List of base stations	Reports > Towers	Devices > Base Stations
List of batch jobs	Reports > Show Batch Jobs	System Intelligence > Today <ul style="list-style-type: none"> ➤ Scheduled Events ➤ Event History
List of meters' connection status	Reports > Connection Status	Devices > Meters > Device List > Filter by Service Switch Connected
List of meters with operational exceptions	Unavailable	Reports > Report Views > Troubled Meter
List of meters with lifecycle exceptions	Unavailable	Reports > Report Views > Lifecycle

MANAGE DEVICE ALERTS

Alerts can be classified for category and severity, and notification can be configured via email for recipient and frequency.

TABLE 3: ALERTS

Task	FlexWare	Device Manager
Current Alerts on a device	Search for a device > IMIP > Summary > Alarms	Devices > (select a device) Device Details > Alerts tab
Get Current Alerts on a device	Search for a device > IMIP > Summary > Alarms > Refresh from Database	Devices > Meters (select a device) > Actions > Manage Alerts > Get Current Alerts
Clear Alerts on a device	Search for a device > IMIP > Configuration > Clear Alarms	Devices > Meters (select a device) > Actions > Manage Alerts > Clear Alerts
Clear Alerts on multiple devices	Unavailable	Alerts > Select devices > Actions > Manage Alerts > Clear
Clear Quarantine Alerts on a device	Reports > Quarantined Meters > Reset Quarantine	Devices > Meters (select a device) > Actions > Manage Alerts > Clear Quarantine Alerts

Transitioning from FlexWare to Sensus Launch Pad

For Electric Utilities with RNI 3.3.x systems



Task	FlexWare	Device Manager
Clear Quarantine Alerts on multiple devices	Reports > Quarantined Meters > Reset Quarantine	Alerts > Filter Alert [Read Data Quarantine] > Actions > Manage Alerts > Clear

ACTIONS

An action can be performed on one or multiple devices and includes operations such as performing a remote connect/disconnect.

TABLE 4: ACTIONS

Task	FlexWare	Device Manager
Remote Connect/Disconnect		
Arm a device	Search for a device > IMIP > Configuration > Connect > Connect/Arm/Disconnect	Devices > Meters (select a device) > Actions > Service Switch > Arm
Connect a device	Search for a device > IMIP > Configuration > Connect/Arm/Disconnect	Devices > Meters (select a device) > Actions > Service Switch > Connect
Disconnect a device	Search for a device > IMIP > Configuration > Connect/Arm/Disconnect	Devices > Meters (select a device) > Actions > Service Switch > Disconnect
Connection Status	Search for a device > IMIP > Commands > Retrieve Connection Status	Devices > Meters (select a device) > Actions > Service Switch > Get Switch Status
Opt-Out		
Get Operational Mode	Unavailable	Devices > Meters (select a device) > Actions > Operational Mode > Get Operational Mode
Set Operational Mode to Normal	Unavailable	Devices > Meters (select a device) > Actions > Operational Mode > Normal
Set Operational Mode to On Demand	Unavailable	Devices > Meters (select a device) > Actions > Operational Mode > On Demand
Set Operational Mode to Opt-out	Unavailable	Devices > Meters (select a device) > Actions > Operational Mode > Opt-out

Transitioning from FlexWare to Sensus Launch Pad

For Electric Utilities with RNI 3.3.x systems



VIEW REQUESTS

Display events and actions applied to a device or events and actions across all devices in Device Manager.

TABLE 5: REQUESTS

Task	FlexWare	Device Manager
View Event History on a device – Operator Role	Search for a device > IMIP > Summary > Event History	Search for a Device > Device Details > History
View Event History on a device – Admin Role	Search for a device > IMIP > Summary > Event History	System Intelligence > Event History > Filter
View a requested action in the Requests queue	Search for a device > IMIP > Requests	Anywhere in DM > Recent Requests

Transitioning from FlexWare to Sensus Launch Pad

For Electric Utilities with RNI 3.3.x systems



ADMINISTRATION

Electric Device Manager provides the ability to manage device configuration, device grouping, and device lifecycle using actions. Actions vary according to device type and enabled features.

MANAGE CONFIGURATION

Device Manager allows operators and administrators to set and/or modify configuration parameters and operational thresholds on a device.

TABLE 6: CONFIGURATION

Task	FlexWare	Device Manager
Meter Configuration		
Update the latitude/longitude of a device	Search for a device > IMIP > Configuration > GeoSpatial Coordinates	Search for a Device > Device Details > About this Device > Location > Edit Location
Set the Endpoint ID	Search for a device > IMIP > Configuration > Set Endpoint Id	Search for a Device > Device Details > [Radio Configuration] Advanced > [General Setup] Set
Configure Radio General Setup	Administration > [Meters] Reprogramming > Electric > Power Quality	Search for a Device > Device Details > [Radio Configuration] Advanced > [Power Quality] Set
Modify the frequency settings*	Administration > [Meters] Reprogramming > Electric > Static Configuration	Search for a Device > Device Details > [Radio Configuration] Advanced > Transmit *This should NEVER be made without approval by Sensus.
Update a Meter ID	Administration > [Meters] Reprogramming > General Setup > Meter Id	Device Details > About this Device > [Radio Configuration] Advanced > General Setup
Tower Management		
Edit Base Station Information	Administration > Towers	Device List > Base Stations

Transitioning from FlexWare to Sensus Launch Pad

For Electric Utilities with RNI 3.3.x systems



MANAGE GROUPS AND TAGS

Device Manager allows the creation of groups of devices for a more focused display and analysis of the device data. Tags provide a temporary filtering capability.

TABLE 7: GROUPS AND TAGS

Task	FlexWare	Device Manager
Groups		
Add a Device to a Group	Administration > Meter Groups > Edit	Devices > Meters > (select a device) Actions > Group > Add Device
Remove a Device from a Group	Administration > Meter Groups > Edit	Devices > Meters > (select a device) Actions > Group > Remove Device
Create a Meter group	Administration > Meter Groups > Create Group	Groups > Meters > Create Meter Group
Tags		
Add a tag to a device	Unavailable	Devices > Meters (select a device) > Actions > Tag > Add device
Remove a tag from a device	Unavailable	Devices > Meters (select a device) > Actions > Tag > Remove Device
Create a tag	Unavailable	System Settings > Manage Tags > Add Tag

MANAGE EVENTS

Device Manager provides the ability to initiate and manage events on a device(s).

TABLE 8: EVENTS

Task	FlexWare	Device Manager
Demand Reset	Varies with Release version	Devices > Meters (select a device) > Actions > Demand Reset > Initiate Event

Transitioning from FlexWare to Sensus Launch Pad

For Electric Utilities with RNI 3.3.x systems



INVENTORY MANAGEMENT

Device Manager provides the ability to manage the lifecycle of FlexNet electric devices.

TABLE 9: MANAGE LIFECYCLE

Task	FlexWare	Device Manager
Modify Lifecycle State	Tools > MDMIF > Inventory	Devices > Meters (select a device) > Actions > Lifecycle > Return to Inventory
Delete a meter	Tools > MDMIF > Delete	Devices > Meters (select a device) > Actions > Lifecycle > Remove device
Install a meter	Tools > MDMIF > Install	Search for a device > Device Details > Actions > Lifecycle > Install
RMA a device	Administration > Meters > RMA	Devices > Meters (select a device) > Actions > RMA > Add device
Remove a device from RMA status	Unavailable	Devices > Meters (select a device) > Actions > RMA > Remove device

PROVISIONING

Electric Device Manager provides the functionality of initializing and modifying thresholds, setup and binding communications and meter encryption.

TABLE 10: PROVISIONING

Task	FlexWare	Device Manager
Thresholds and Communication		
Provision a meter for advanced voltage setup	Administration > [Meters] Reprogramming > General Setup > Meter Id > Commands > Advanced Voltage Quality Settings Ping	Devices > Meters (select a device) > Actions > Provisioning > Advanced Voltage Setup
Provision a meter for binding	Administration > [Meters] Reprogramming > General Setup > Meter Id > Commands > Binding Ping	Devices > Meters (select a device) > Actions > Provisioning > Binding
Provision a meter for extended setup	Administration > [Meters] Reprogramming > General Setup > Meter Id > Commands > Extended Setup Ping	Devices > Meters (select a device) > Actions > Provisioning > Extended Setup
Provision a meter for form and voltage setup	Administration > [Meters] Reprogramming > Electric	Devices > Meters (select a device) > Actions > Provisioning > Form and Voltage Setup

Transitioning from FlexWare to Sensus Launch Pad

For Electric Utilities with RNI 3.3.x systems



Task	FlexWare	Device Manager
Provision a meter for setup	Administration > [Meters] Reprogramming > Meter Id > Commands > Setup Ping	Devices > Meters (select a device) > Actions > Provisioning > Setup
Provision a meter for time sync	Tools > MDMIF > TimeSync	Devices > Meters (select a device) > Actions > Provisioning > Time Sync
Encryption		
Disable Encryption on a device	Search for a device > IMIP > Configuration > Security > Request Disable Encryption	Devices > Meters (select a device) > Actions > Encryption > Disable
Enable Encryption on a device (Security)	Search for a device > IMIP > Configuration > Security > Request Enable Encryption	Devices > Meters (select a device) > Actions > Encryption > Enable
Rotate (Encryption) Keys	Tools > Select Endpoints > Rotate Keys	Devices > Meters (select a device) > Actions > Encryption > Rotate Keys
Suspend AES	Tools > Select Endpoints > Suspend Encryption	Devices > Meters (select a device) > Actions > Encryption > Suspend AES

MANAGING DEMAND RESPONSE (HAN) DEVICES

Device Manager allows the user to manage Home Area Network (HAN) devices, In-Home Devices (IHDs), Load Control Modules (LCMs) and Programmable Communicating Thermostats (PCTs).

TABLE 11: HAN

Task	FlexWare	Device Manager
Get Connection Status of a HAN device	Unavailable	Devices > Meters (select a device) > Actions > HAN > Get Connection Status
Send a Text Message to a HAN device	Unavailable	Devices > Meters (select a device) > Actions > HAN > Send Text Message
Connect a HAN device	Unavailable	Devices > Meters (select a device) > Device Details > Actions > HAN > Connect HAN device
Event Status (Demand Response)	Unavailable	Devices > Meters (select a device) > Actions > Demand Response > Get Event Status
Initiate an Event	Unavailable	Devices > Meters (select a device) > Actions > Demand Response > Initiate Event

Transitioning from FlexWare to Sensus Launch Pad

For Electric Utilities with RNI 3.3.x systems



SECTION 2: SYSTEM ADMINISTRATION APPLICATION



The System Administration application is used to configure parameter settings, network settings and manage users and passwords. The following tasks are performed using the System Administration application in Sensus Launch Pad.

TABLE 12: SYSTEM ADMINISTRATION TASKS

Task	FlexWare	System Administration
Configuration		
Modify Configuration Settings	Administration > Customer/Network Configuration	Configuration > Configuration
Modify Customer Name/Description	Administration > Customer/Network Configuration > Customers	Configuration > Customers
Modify Network Information	Administration > Customer/Network Configuration > Networks	Configuration > Networks
Modify Sub-Network Information	Administration > Customer/Network Configuration > Sub-Networks	Configuration > Sub-Networks
Settings		
Modify Customer Information	Administration > [Configuration] Settings	Settings > Customer Information
Modify Server Information	Administration > [Configuration] Settings	Settings > Servers
View Server / Service Versions	About FlexNet RNI	Settings > Services
Users		
Add/Modify Users	Administration > [Configuration] User Roles > Users	Users
Add/Modify Roles	Administration > [Configuration] User Roles > Roles	Users > Roles
Modify Password Settings	Administration > [Configuration] User Roles > Password Management	Users > Password Management

Transitioning from FlexWare to Sensus Launch Pad

For Electric Utilities with RNI 3.3.x systems



SECTION 3: FIRMWARE DOWNLOAD (FWDL) APPLICATION

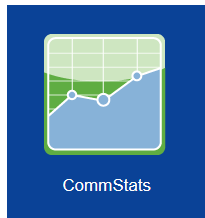


The Firmware Download application is used to perform an over-the-air firmware download on one or multiple electric devices.

TABLE 13: ELECTRIC FWDL TASKS

Task	FlexWare	Firmware Download
FWDL		
Perform a FWDL	Tools > Electric Meter Firmware Download	Electric FWDL Note: If you are a multi-service utility, the NA2W FWDL icon also displays.

SECTION 4: COMMSTATS APPLICATION



The CommStats application is used to manage the health of the RF network using charts and graphs. It is accessed through Sensus Launch Pad and operates on Internet Explorer™ version 9.

TABLE 14: COMMSTATS

Task	FlexWare	CommStats
CommStats		
View System Graphs/Charts	Diagnostics > CommStats	CommStats